

# FOR SUBLEASE

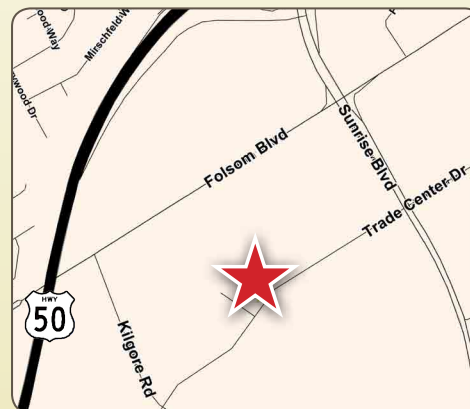


## 11135 TRADE CENTER DR, SUITE 130 RANCHO CORDOVA, CA

### PROPERTY HIGHLIGHTS

- +/- 40,000 SF Total
  - +/- 6,000 SF Office
  - +/- 20,000 SF Tech/Assembly
  - +/- 14,000 SF Warehouse
- Fully Conditioned Space
- Grade Level Loading
- CMU Zoning
- Good Power Distribution
- Great Freeway Access
- Landlord will consider longer term

**NEW LOWER PRICE:  
\$0.30 PSF/MTH**



Grubb & Ellis Company  
1610 Arden Way, Suite 195  
Sacramento, CA 95815  
916.418.6000 Phone  
916.418.0231 Fax  
License #00812184

**Matt Cologna, SVP | Industrial Group | 916.418.6016 | [matt.cologna@grubb-ellis.com](mailto:matt.cologna@grubb-ellis.com) | License #01210309**

The information contained herein was obtained from third parties, and it has not been independently verified by the real estate brokers. Buyers/tenants should have the experts of their choice inspect the property and verify all information. Real estate brokers are not qualified to act as or select experts with respect to legal, tax, environmental, building construction, soils-drainage or other such matters.

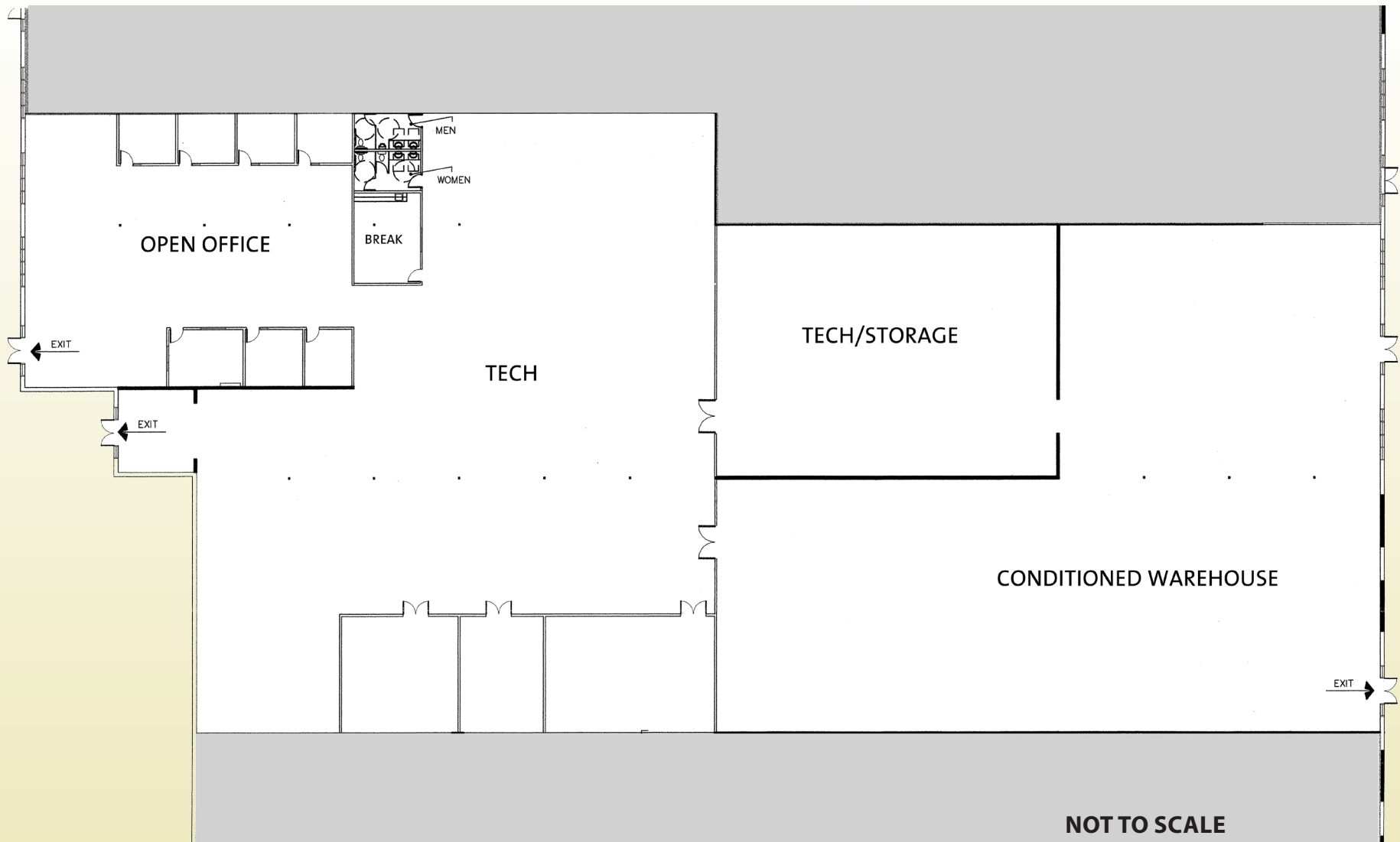
**For more information, please contact:**

**CENTRAL VALLEY COMMERCIAL**



**GRUBB & ELLIS**  
From Insight to Results

# FOR SUBLEASE



For more information, please contact:

Matt Cologna, SVP | Industrial Group | 916.418.6016 | [matt.cologna@grubb-ellis.com](mailto:matt.cologna@grubb-ellis.com) | License #01210309

CENTRAL VALLEY COMMERCIAL



GRUBB & ELLIS  
From Insight to Results