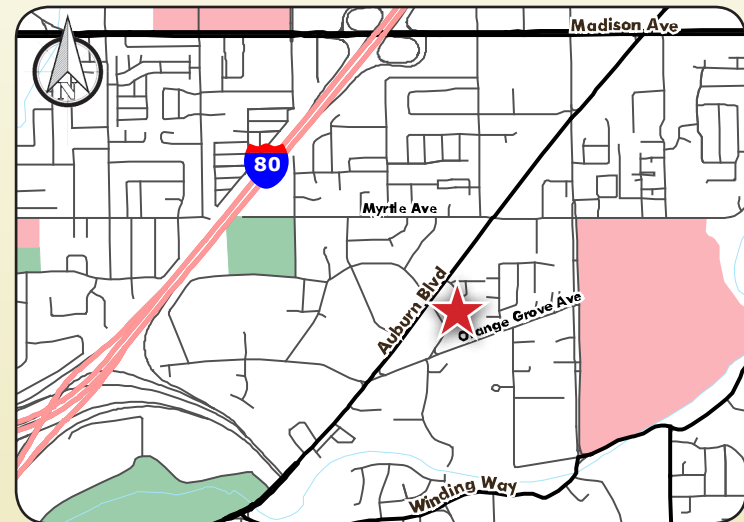


FOR LEASE

4878 PASADENA AVE SACRAMENTO, CA

PROPERTY HIGHLIGHTS

- ±3,360 SF Total
- ±250 SF Office
- 2 Drive In Doors
- ±16' Clear Height
- Sprinklered
- Asking \$1,500 per month gross



For more information, please contact:

Dave Hornbeck, LEED AP | Industrial Group | 916.418.6019 | dave.hornbeck@grubb-ellis.com | License #01849016

Grubb & Ellis Company 1610 Arden Way, Suite 195, Sacramento, CA 95815 916.418.6000 916.418.0231 fax License #00812184

The information contained herein was obtained from third parties, and it has not been independently verified by the real estate brokers. Buyers/tenants should have the experts of their choice inspect the property and verify all information. Real estate brokers are not qualified to act as or select experts with respect to legal, tax, environmental, building construction, soils-drainage or other such matters.

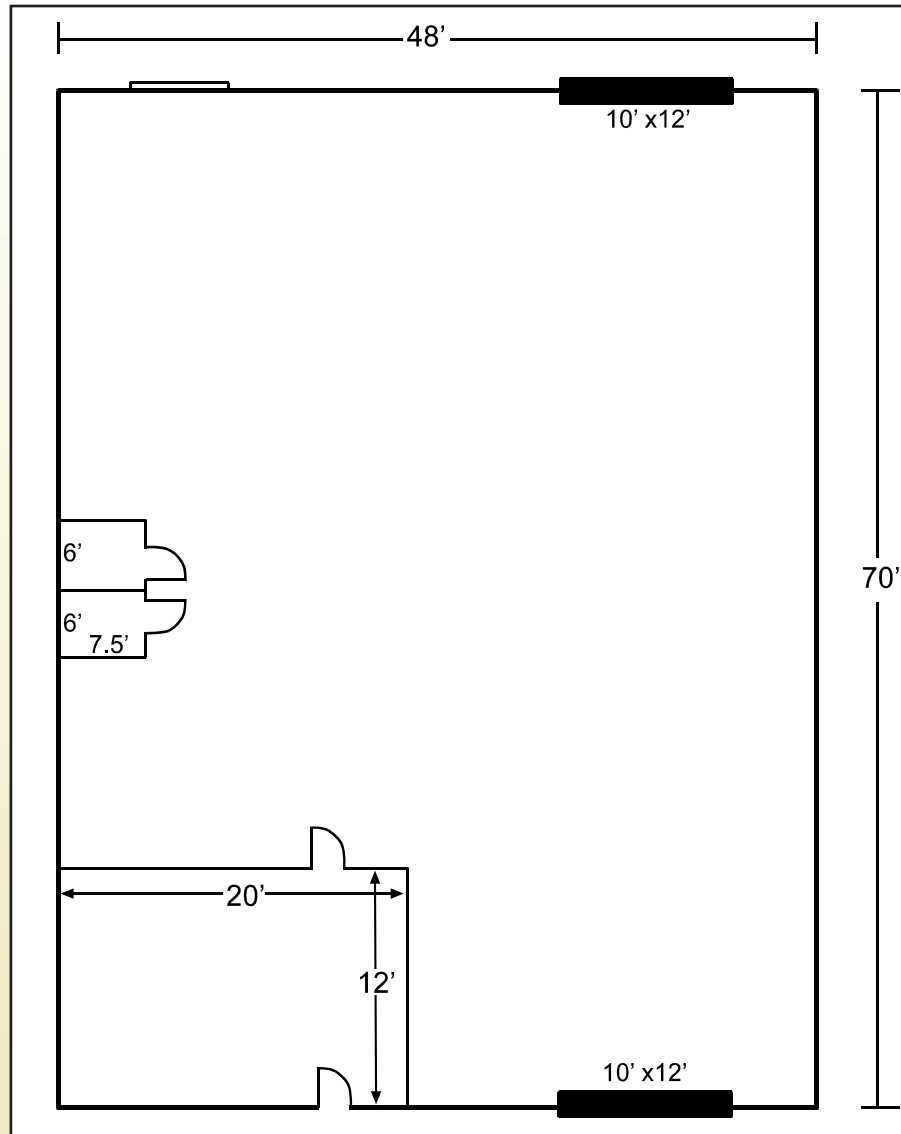


CENTRAL VALLEY COMMERCIAL



GRUBB & ELLIS
From Insight to Results

FOR LEASE



For more information, please contact:

Dave Hornbeck, LEED AP | Industrial Group | 916.418.6019 | dave.hornbeck@grubb-ellis.com | License #01849016

Grubb & Ellis Company 1610 Arden Way, Suite 195, Sacramento, CA 95815 916.418.6000 916.418.0231 fax License #00812184



CENTRAL VALLEY COMMERCIAL



GRUBB & ELLIS
From Insight to Results