

AVAILABLE

4231 PACIFIC ST, #35 ROCKLIN, CA

PROPERTY HIGHLIGHTS

- ±2,200 SF Total
- 1,380 SF Office
- Drive in loading
- 18' Clear height
- Sublease through July 2011



For more information, please contact:

Matt Cologna, SVP | SIOR | 916.418.6016 | matt.cologna@grubb-ellis.com | License #01210309

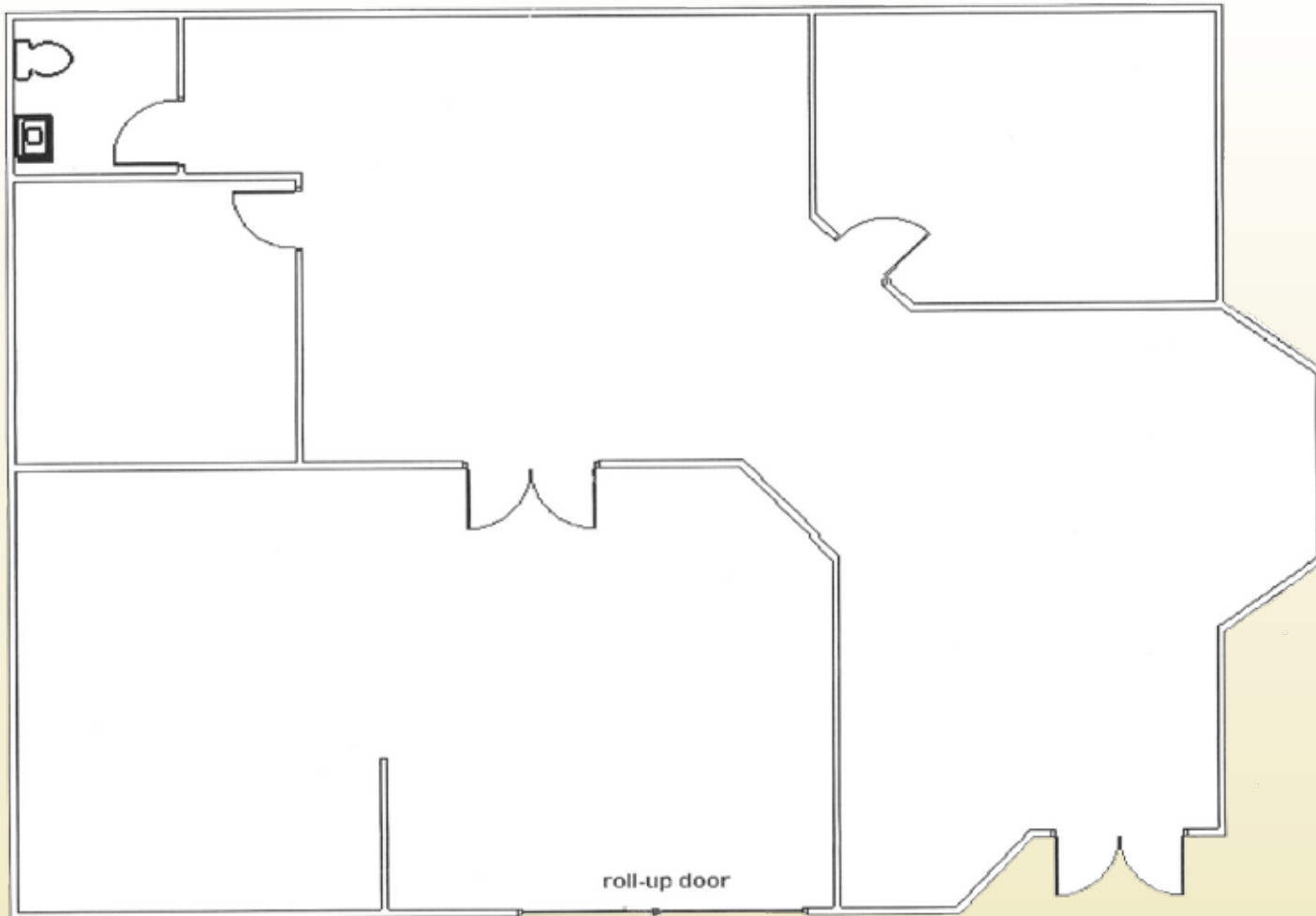
Dave Hornbeck, LEED AP | Industrial Group | 916.418.6019 | dave.hornbeck@grubb-ellis.com | License #01849016

Grubb & Ellis Company 1610 Arden Way, Suite 195, Sacramento, CA 95815 916.418.6000 916.418.0231 fax License #00812184

The information contained herein was obtained from third parties, and it has not been independently verified by the real estate brokers. Buyers/tenants should have the experts of their choice inspect the property and verify all information. Real estate brokers are not qualified to act as or select experts with respect to legal, tax, environmental, building construction, soils-drainage or other such matters.



FLOOR PLAN



For more information, please contact:

Matt Cologna, SVP | SIOR | 916.418.6016 | matt.cologna@grubb-ellis.com | License #01210309

Dave Hornbeck, LEED AP | Industrial Group | 916.418.6019 | dave.hornbeck@grubb-ellis.com | License #01849016

Grubb & Ellis Company 1610 Arden Way, Suite 195, Sacramento, CA 95815 916.418.6000 916.418.0231 fax License #00812184



GRUBB & ELLIS
From Insight to Results